

D-M-E Custom-Configured Mold Bases

SelectBase™

Feature-based selections with rapid delivery



WIDEOPEN

Mold Base Selections



With **D-M-E SelectBase**, the only limit to your mold base is your imagination. Need guided ejection? Want vented leader pins? Prefer a three-piece ejector housing? SelectBase is available in over 75 trillion possible configurations – one of them is perfect for your specific application.

All this and more, and at a competitive price. And, because it's from D-M-E, you know it'll be done right the first time, on time – *every* time.

A whole new way of ordering

With SelectBase, you can choose from an extensive menu of options to configure exactly the mold base you need. What some companies would call a special is no problem with SelectBase.

Widest range of features and sizes available

SelectBase isn't just a limited range of common sizes – no one offers more than D-M-E. More sizes. More high-quality steel types. More plate thicknesses. More value-added features.

**Made to order**

What you want – not just what’s in stock. That’s the philosophy behind SelectBase.

At D-M-E, our leading-edge manufacturing and workflow technologies enable us to build your custom-configured SelectBase with unparalleled speed. Most configurations can be shipped in only a few days, and each SelectBase ships within 5 working days.

Buy only the features you need

SelectBase is driven by a simple premise: Your mold base is made up of only the specific features you want. No paying for “extras” that you didn’t need. You can even specify the steel type – at the plate level – to enable customization to meet your objectives.

Why SelectBase?

At D-M-E, we understand the challenges you face. We know that anything that gives you an edge in today’s competitive marketplace can enable a business advantage. That’s why we developed SelectBase – to get you a mold base that’s configured exactly the way you need it, as quickly as possible, without price premiums.



Key Features

Nobody delivers like D-M-E. The SelectBase mold base offers over 75 trillion possible configurations. Some key features and options include:

How to use this catalog

The following pages detail the choices available with SelectBase. These pages can be used as a worksheet to configure your order, or in combination with the SelectBase order form. If you have questions, visit www.dme.net/SelectBase or contact D-M-E and one of our knowledgeable representatives will assist you.

43 Nominal Sizes

9 Plate Thicknesses

4 Steel Types

Guided Ejection

Pry Slots

Lifting Holes

Leader Pin Vents

Ejector Housing Cover

Feature Positions

Feature Omissions

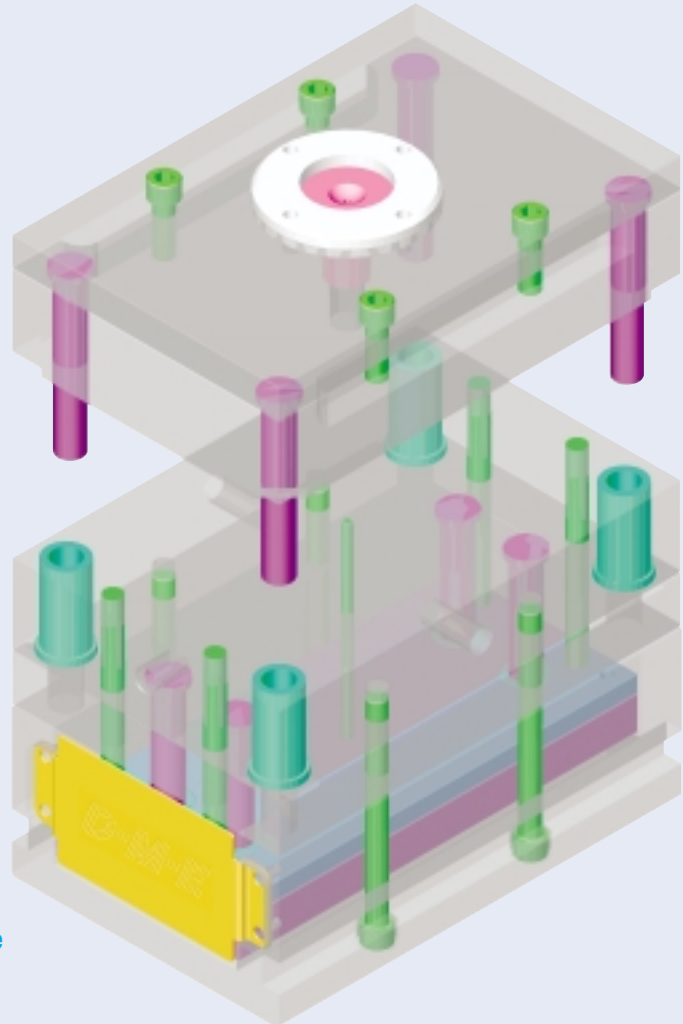
Three-Piece or Welded Housing Type

Clamp Slot Type

Mixed Steel

Sprue Puller Pin Diameter

Stop Pin Location



Nobody knows mold bases like D-M-E

Since 1942, moldmakers worldwide have relied on D-M-E for efficient mold base design and manufacture. Ongoing capital investments in modern mold base manufacturing equipment, design software, and tooling, along with our expansive on-hand component inventories, allow us to offer exceptional quality, time-saving features, fast delivery, and competitive pricing. This core focus of excellence enables D-M-E to offer SelectBase to our moldmaking customers.

Manufacturing power enables flexible solutions

D-M-E manufactures mold bases 24 hours a day on high-speed machining centers and finish grinders to ensure that every mold base is delivered to your precise specifications – on time, every time. Certified ISO 9001 quality procedures ensure every detail is exactly what you expected – controlling the process from the raw materials to your door. Advanced workflow processes, like JIT and our Lean Production System, help reduce turnaround times and improve efficiency.



More than just steel

Hire the best. Provide the best training. Then give them the best tools and technology to take care of our customers. It's all part of the D-M-E equation. Your benefit? Better service and competitive pricing with D-M-E quality. Our people are a big part of the SelectBase advantage.



Guided Ejection Systems

Guided Ejection Systems hold the ejector assembly in alignment and support the weight of the ejector assembly throughout the molding cycle – greatly reducing wear on ejection components and preventing cocking of the ejector assembly.

Select System:

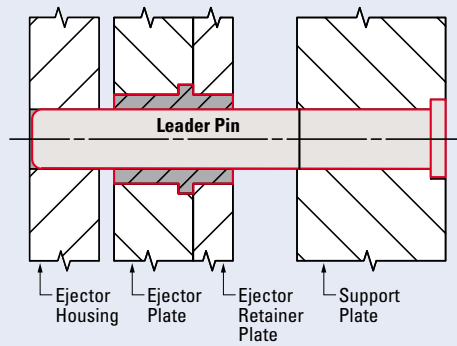
- System 1
- System 2

Select Bushing Type:

- Bronze Plated Steel Bushings
- Self Lubricating Bushings

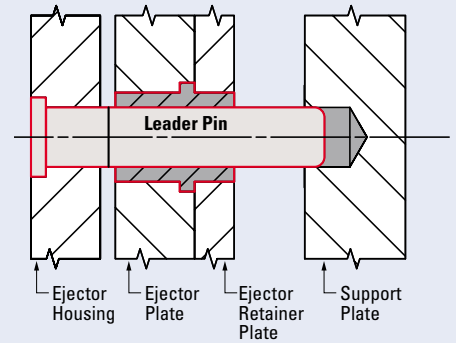
SYSTEM 1

When pins are installed in the support plate, the ejector housing can be removed from the mold without removing ejector plates. This permits easy access to service the ejector system.



SYSTEM 2

Pins installed in the ejector housing permit fast installation. When the ejector housing is removed from the mold base, the complete ejector assembly is removed.



Select Guided Ejection Position

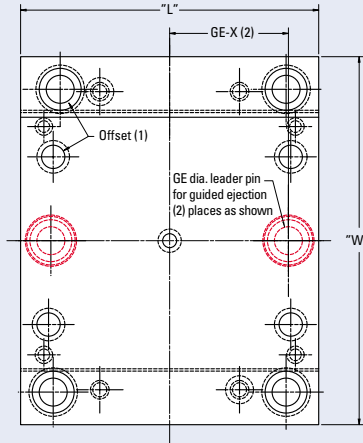
Recommended position from table will be provided. If a different position is required, indicate below.

GEx _____
 GEy _____

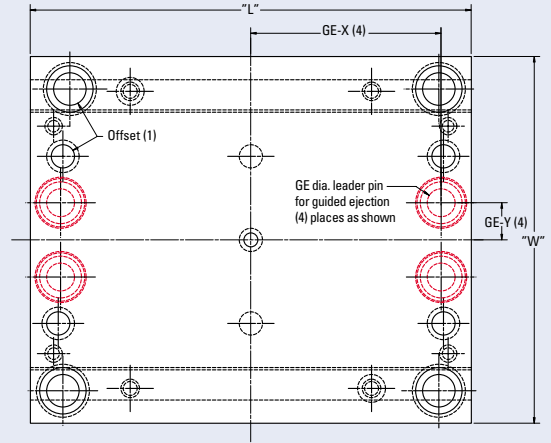
Select Guided Ejection Diameter

Recommended diameter from table will be provided. If a different diameter is required, indicate below. A different diameter will require a positioning change.

- 0.750
- 0.875
- 1.000
- 1.250



“B” half of mold
 For 88, 812 & 108 mold base size only



“B” half of mold
 For 1012 – 2435 bases

Guided Ejection Positions

Pin Diameter (Recommended)	Base Size	GE X	GE Y
3/4	88	3.000	Center
	812	5.000	Center
	108	3.062	Center
	1012	5.000	1.000
	1016	7.062	1.000
	1020	9.062	1.000
	1112	5.062	1.625
	1114	6.062	1.625
	1118	8.062	1.625
	1123	10.812	1.625
7/8	1212	5.000	1.750
	1215	6.500	1.750
	1220	9.000	1.750
	1223	10.750	1.750
	1315	6.500	2.375
	1318	8.000	2.375
	1321	9.375	2.375
	1323	10.750	2.375
	1326	12.000	2.375
	1329	13.750	2.375

Pin Diameter (Recommended)	Base Size	GE X	GE Y
1"	1518	7.875	2.375
	1524	10.812	2.375
	1529	13.688	2.375
	1616	6.938	2.875
	1620	8.938	2.875
	1623	10.688	2.875
	1626	11.938	2.875
	1629	13.688	2.875
	1635	16.688	2.875
	1724	10.812	3.125
	1729	13.688	3.125
	1818	7.938	3.875
	1820	8.938	3.875
	1823	10.688	3.875
1-1/4	1826	11.938	3.875
	1829	13.688	3.875
	1835	16.688	3.875
	1924	10.812	4.625
	1929	13.688	4.625
1-1/4	1935	16.688	4.625
	2424	10.688	6.125
	2429	13.562	6.125
2435	16.562	6.125	

Pry Slots

SelectBase features Pry Slots, installed in any plate specified, on the parting and/or non-parting line side. This provides handling ease when opening and/or disassembling a mold.

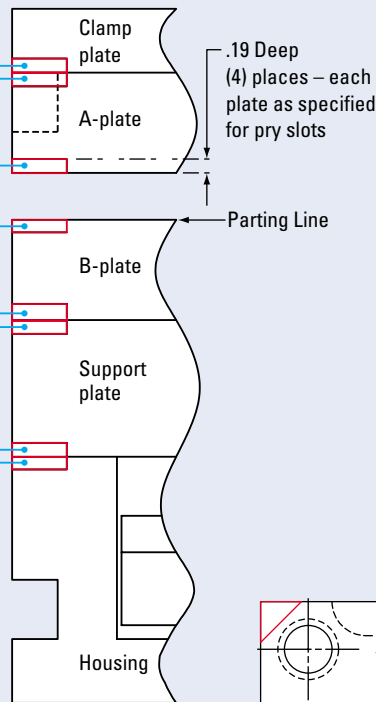
Select Pry Slots

- S CPP
- S APN
- S APP

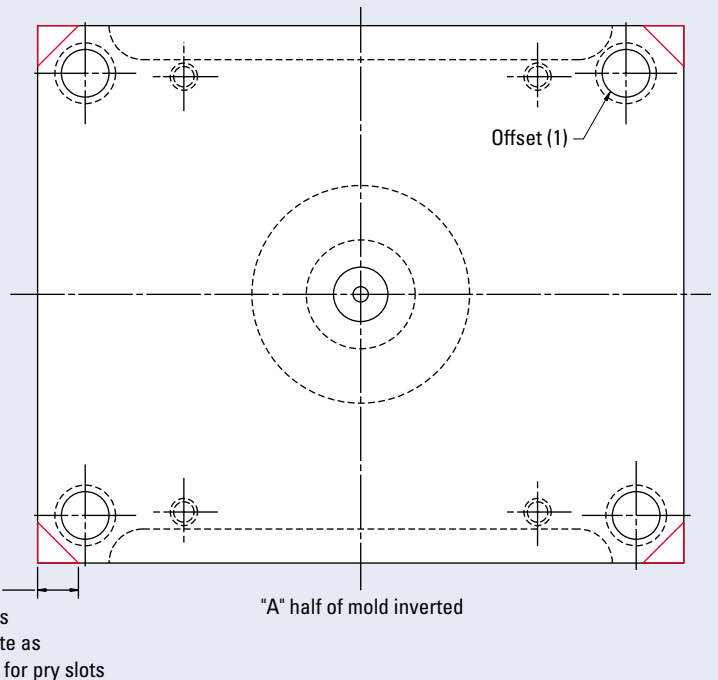
- S BPP
- S BPN
- S SUP

- S SUN
- S HOP

Pry Slot Options



Base Size	Slot Length "Z"
88-1123	.56 x 45°
1212-1315	.88 x 45°
1318-2435	1.00 x 45°



Lifting Holes can be used to install hoist rings for ease of handling. SelectBase can be configured only with Lifting Holes which are appropriate for the specific mold base size. Refer to the D-M-E catalog for a comprehensive selection of Hoist Rings.

Select Lifting Holes

Lifting holes can be selected up to 3 per plate edge. They are available in top clamp plate, A-plate, B-plate, support plate, and bottom clamp plate.

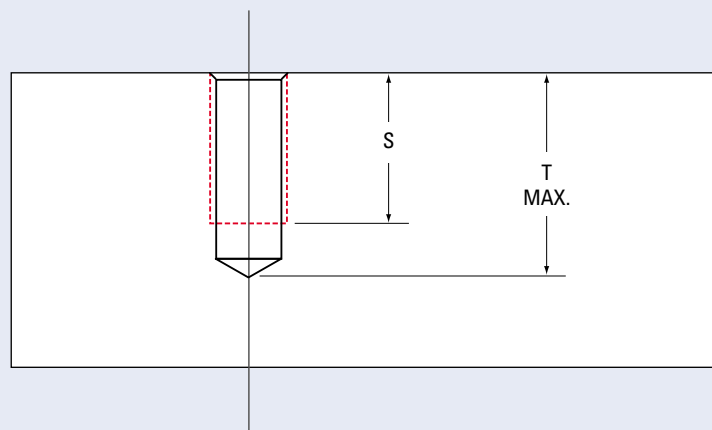
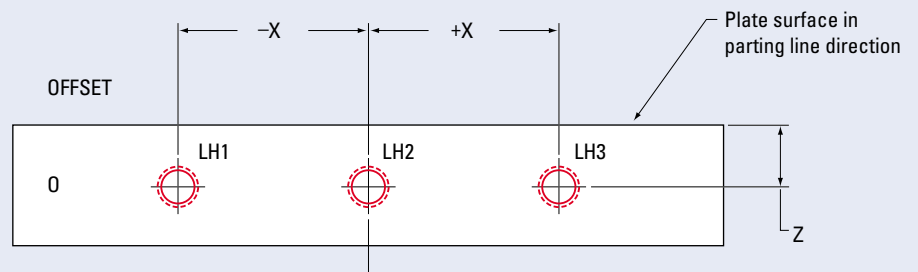
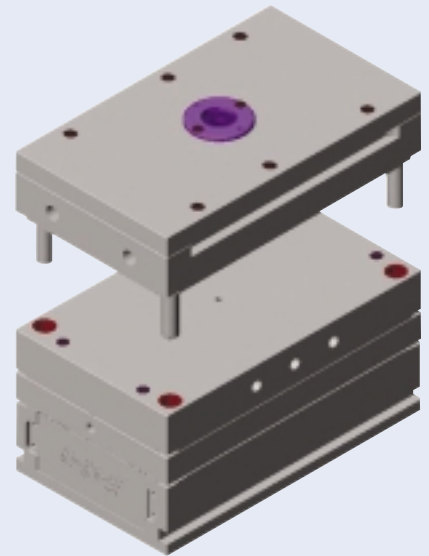
Note that for safety reasons, only the recommended hole diameters (or larger) shown in the table are offered.

Lifting Hole Diameters

Base Size	Plate Thickness	
	7/8	1-3/8 and larger
88-1118	1/2-13 UNC	1/2-13 UNC
1123-1524	5/8-11 UNC	5/8-11 UNC
1529-1829	5/8-11 UNC	3/4-10 UNC
1835-2429	5/8-11 UNC	1"-8 UNC
2435	N/A	1"-8 UNC

Lifting Holes

Thread Size	S	T MAX.
1/2-13	1.00	1.38
5/8-11	1.25	1.75
3/4-10	1.50	2.00
1"-8	2.00	2.62



Return Pins and Stop Pins

Return Pins are used to ensure correct return of the ejector assembly to the home position. D-M-E return pins are precision-ground from superior quality hotwork die steel.

Stop Pins arrest travel — preventing excessive wear and possible housing damage.

Select Return Pins

Position 1

Standard outboard position for maximum space.

Position 2

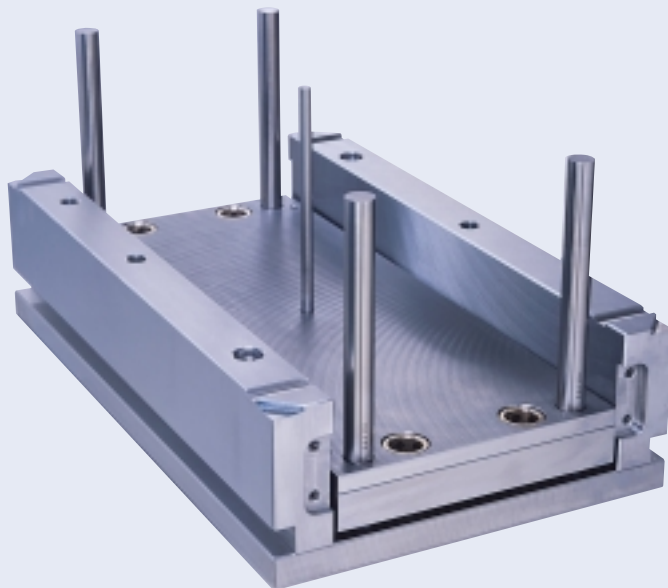
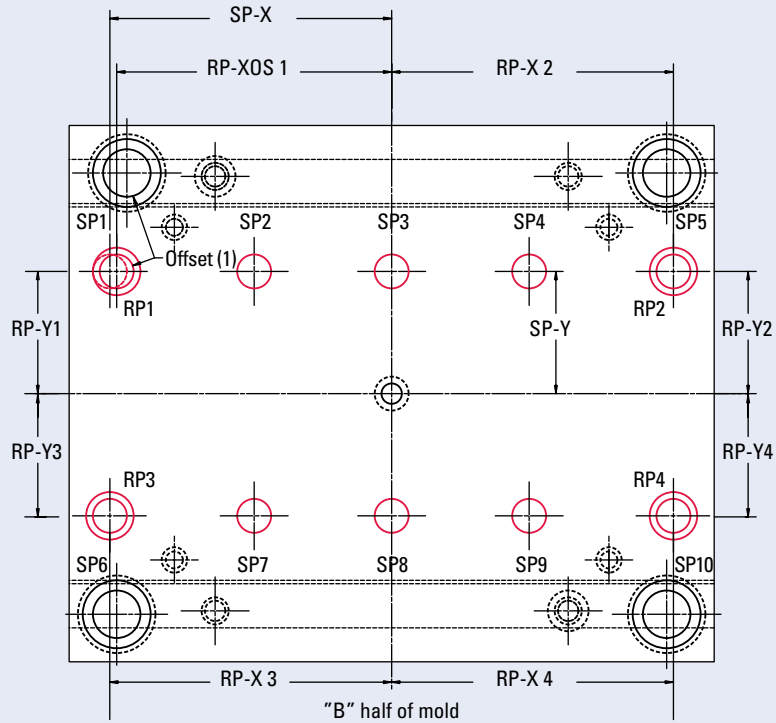
Inboard position to allow for spring pockets.

Recommended position from table will be provided. If a different position is required, indicate below.

Select Position

RPxos1 _____	RPy1 _____
RPx2 _____	RPy2 _____
RPx3 _____	RPy3 _____
RPx4 _____	RPy4 _____

- Omit machining for return pins
- Omit return pins



SelectBase Return Pin and Stop Pin Positions

Base Size	RP Diameter (Recommended)	RP-y SP-y	Position 1		Position 2		SP-x1 SP-x6	SP-x2 SP-x7	SP-x3 SP-x8	SP-x4 SP-x9	SP-x5 SP-x10
			RP-xos	RP-x	RP-xos	RP-x					
88	0.500	1.500	3.250	3.375	3.188	3.312	3.375				3.375
812	0.500	1.500	5.250	5.375	5.188	5.312	5.375		On Center		5.375
108	0.625	2.250	3.250	3.375	3.125	3.250	3.375				3.375
1012	0.625	2.250	5.188	5.312	5.063	5.188	5.312		On Center		5.312
1016	0.625	2.250	7.250	7.375	7.125	7.250	7.375	2.500		2.500	7.375
1020	0.625	2.250	9.250	9.375	9.125	9.250	9.375	3.125		3.125	9.375
1112	0.625	2.812	5.250	5.375	5.125	5.250	5.375		On Center		5.375
1114	0.625	2.812	6.250	6.375	6.125	6.250	6.375		On Center		6.375
1118	0.625	2.812	8.250	8.375	8.125	8.250	8.375		On Center		8.375
1123	0.625	2.812	11.000	11.125	10.875	11.000	11.125	3.750		3.750	11.125
1212	0.750	3.188	5.250	5.375	5.000	5.125	5.375		On Center		5.375
1215	0.750	3.188	6.750	6.875	6.500	6.625	6.875	2.250		2.250	6.875
1220	0.750	3.188	9.250	9.375	9.000	9.125	9.375	3.094		3.094	9.375
1223	0.750	3.188	11.000	11.125	10.750	10.875	11.125	3.750		3.750	11.125
1315	0.750	3.812	6.750	6.875	6.500	6.625	6.875	2.250		2.250	6.875
1318	0.750	3.812	8.250	8.375	8.000	8.125	8.375	2.750		2.750	8.375
1321	0.750	3.812	9.500	9.625	9.375	9.500	9.625	4.000		4.000	9.625
1323	0.750	3.812	10.875	11.000	10.750	10.875	11.000	4.000		4.000	11.000
1326	0.750	3.812	12.125	12.250	12.000	12.125	12.250	4.000		4.000	12.250
1329	0.750	3.812	13.875	14.000	13.750	13.875	14.000	5.000		5.000	14.000
1518	0.750	3.875	8.125	8.250	7.938	8.062	8.250	2.750		2.750	8.250
1524	0.750	3.875	11.000	11.125	10.875	11.000	11.125	3.750		3.750	11.125
1529	0.750	3.875	13.875	14.000	13.750	13.875	14.000	4.688		4.688	14.000
1616	0.750	4.375	7.125	7.250	7.000	7.125	7.250	2.375		2.375	7.250
1620	0.750	4.375	9.125	9.250	9.000	9.125	9.250	3.062		3.062	9.250
1623	0.750	4.375	10.875	11.000	10.750	10.875	11.000	4.000		4.000	11.000
1626	0.750	4.375	12.125	12.250	12.000	12.125	12.250	4.000		4.000	12.250
1629	0.750	4.375	13.875	14.000	13.750	13.875	14.000	4.688		4.688	14.000
1635	0.750	4.375	16.875	17.000	16.750	16.875	17.000	8.500	On Center	8.500	17.000
1724	0.750	4.625	11.000	11.125	10.875	11.000	11.125	3.750		3.750	11.125
1729	0.750	4.625	13.875	14.000	13.750	13.875	14.000	4.688		4.688	14.000
1818	0.750	5.375	8.125	8.250	8.000	8.125	8.250	2.750		2.750	8.250
1820	0.750	5.375	9.125	9.250	9.000	9.125	9.250	3.062		3.062	9.250
1823	0.750	5.375	10.875	11.000	10.750	10.875	11.000	4.000		4.000	11.000
1826	0.750	5.375	12.125	12.250	12.000	12.125	12.250	4.000		4.000	12.250
1829	0.750	5.375	13.875	14.000	13.750	13.875	14.000	4.688		4.688	14.000
1835	0.750	5.375	16.875	17.000	16.750	16.875	17.000	8.500	On Center	8.500	17.000
1924	0.750	6.125	11.000	11.125	10.875	11.000	11.125	3.750		3.750	11.125
1929	0.750	6.125	13.875	14.000	13.750	13.875	14.000	4.688		4.688	14.000
1935	0.750	6.125	16.875	17.000	16.750	16.875	17.000	8.500	On Center	8.500	17.000
2424	0.750	7.750	11.000	11.125	10.875	11.000	11.125	3.750		3.750	11.125
2429	0.750	7.750	13.875	14.000	13.750	13.875	14.000	4.688		4.688	14.000
2435	0.750	7.750	16.875	17.000	16.750	16.875	17.000	8.500	On Center	8.500	17.000

Ejector Assembly Screws

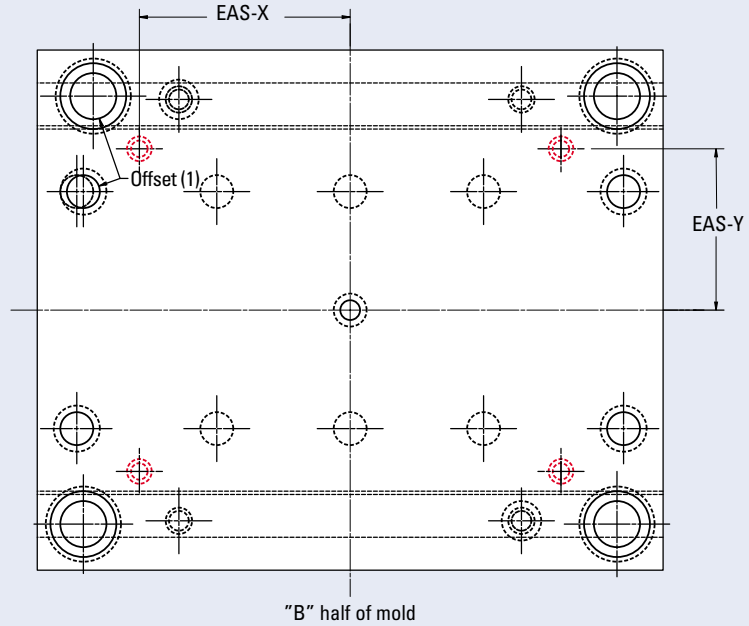
Ejector Assembly Screws are used to hold the plates of the ejector assembly (including the ejector bar and retainer) together.

Select Ejector Assembly

Recommended position from table will be provided. If a different position is required, indicate below.

EASx _____

EASy _____



Ejector Assembly Screw Positions

Base Size	Screw Size	EAS X	EAS Y	Base Size	Screw Size	EAS X	EAS Y
88	5/16-18	3.375	2.250	1518	3/8-16	8.312	5.000
812	5/16-18	5.375	2.250	1524	3/8-16	11.250	5.000
108	5/16-18	3.375	3.062	1529	3/8-16	14.125	5.000
1012	5/16-18	5.312	3.062	1616	3/8-16	7.375	5.438
1016	5/16-18	7.375	3.062	1620	3/8-16	9.375	5.438
1020	5/16-18	9.375	3.062	1623	3/8-16	11.125	5.438
1112	5/16-18	4.562	3.312	1626	3/8-16	12.375	5.438
1114	5/16-18	5.562	3.312	1629	3/8-16	14.125	5.438
1118	5/16-18	7.562	3.312	1635	3/8-16	17.125	5.438
1123	5/16-18	10.312	3.312	1724	3/8-16	11.250	5.750
1212	5/16-18	4.500	3.812	1729	3/8-16	14.125	5.750
1215	5/16-18	6.000	3.812	1818	3/8-16	8.375	6.438
1220	5/16-18	8.500	3.812	1820	3/8-16	9.375	6.438
1223	5/16-18	10.250	3.812	1823	3/8-16	11.125	6.438
*1315	3/8-16	5.812	4.250	1826	3/8-16	12.375	6.438
*1318	3/8-16	7.312	4.250	1829	3/8-16	14.125	6.438
1321	3/8-16	8.688	4.250	1835	3/8-16	17.125	6.438
1323	3/8-16	10.062	4.250	1924	1/2-13	11.250	7.250
1326	3/8-16	11.312	4.250	1929	1/2-13	14.125	7.250
1329	3/8-16	13.062	4.250	1935	1/2-13	17.125	7.250
				2424	1/2-13	11.250	8.875
				2429	1/2-13	14.125	8.875
				2435	1/2-13	17.125	8.875

* New X-dimensions effective 10/02.

Ejector Housing Cover

For additional operator safety, SelectBase molds include an ejector housing cover, except when a longer length ejector bar is selected. The perforated D-M-E logo helps the operator to visually determine if the ejector plate and ejector retainer plate are in the returned position. The cover is fastened on both sides with 5/16-18 button-head cap screws. Once again, D-M-E is leading the industry into a safer work environment.

Ejector Housing

D-M-E offers a selection of housing types to fit application demands. A one-piece welded housing is available for customers requiring maximum rigidity and robust durability. For maximum flexibility of configuration options, a three-piece housing is also available.

Select Ejector Housing Type

Welded Housing

Available in #1 steel

Select Riser Height:

- | | |
|--------------------------------|--------------------------------|
| <input type="checkbox"/> 2.500 | <input type="checkbox"/> 4.000 |
| <input type="checkbox"/> 3.000 | <input type="checkbox"/> 4.500 |
| <input type="checkbox"/> 3.500 | |

Three-Piece Housing

- | |
|---|
| <input type="checkbox"/> D-M-E #1 steel |
| <input type="checkbox"/> D-M-E #7 steel |

Select Riser Height:

- | | |
|--------------------------------|--------------------------------|
| <input type="checkbox"/> 2.500 | <input type="checkbox"/> 4.500 |
| <input type="checkbox"/> 3.000 | <input type="checkbox"/> 5.000 |
| <input type="checkbox"/> 3.500 | <input type="checkbox"/> 5.500 |
| <input type="checkbox"/> 4.000 | <input type="checkbox"/> 6.000 |

Select Bottom Clamp Plate Thickness

- | | |
|--------------------------------|--------------------------------|
| <input type="checkbox"/> 0.875 | <input type="checkbox"/> 3.375 |
| <input type="checkbox"/> 1.375 | <input type="checkbox"/> 3.875 |
| <input type="checkbox"/> 1.875 | <input type="checkbox"/> 4.875 |
| <input type="checkbox"/> 2.375 | <input type="checkbox"/> 5.875 |
| <input type="checkbox"/> 2.875 | |



Sprue Bushing and Sprue Puller Pin

The Sprue Bushing provides a seat at the spherical radius for the nozzle of the press. This provides a path for the material from the nozzle to the runner system.

The Sprue Puller Pin removes material from the Sprue Bushing at the end of the molding cycle. It's positioned directly below the Sprue Bushing and is retained between the ejector bar and ejector retainer.

Select Sprue Bushing Series

Standard "B" or "U" (for 88 and 812 mold bases) Series or select any standard D-M-E Sprue Bushings including D-M-E High-Performance Sprue Bushings. (Refer to the D-M-E catalog for more information.)

O (Orifice) _____

R (Radius) _____

Position On Center, or Select Position

X _____ Y _____

Omit Sprue Bushing Hole

Omit Sprue Bushing

Select Sprue Puller Pin Diameter

Recommended diameter (.375 diameter, except 88 and 812 are .250 diameter) or select below if different diameter is required.

.250

.3125

.375

Recommended length, or Select length _____

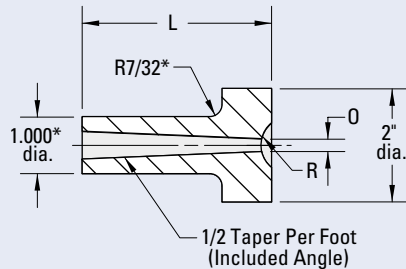
Position on center, or

Select Position

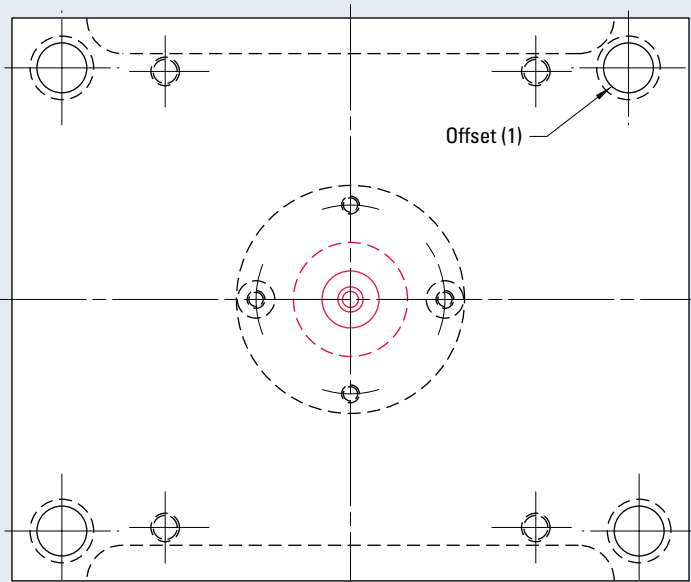
X _____ Y _____

Omit Machining for Sprue Puller Pin

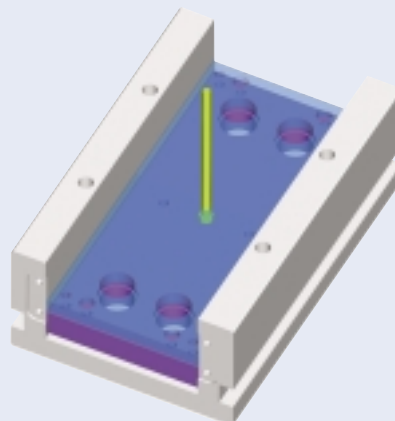
Omit Sprue Puller Pin



*For 88 & 812 mold base diameter is .750 and R equals 1/8



"A" half of mold inverted



Leader Pins and Bushings align both halves of the mold at the parting line. Leader Pin Vents, which allow trapped air to escape from the mold, are designed into all 15-inch-and-wider series molds. When desired, they can be specified on smaller molds.

Select Leader Pins

Recommended diameter from table will be provided. If a different diameter is required, indicate below.

Select Diameter

- 0.750 2.000
- 0.875 2.500
- 1.000 3.000
- 1.500

Recommended Pin Length
(A Plate Thickness + B Plate
Thickness + 1/2) or
Select Pin Length _____

Recommended position from
table will be provided. If a
different position is required,
indicate below.

Select Leader Pin Position

(Bushing location will correspond)

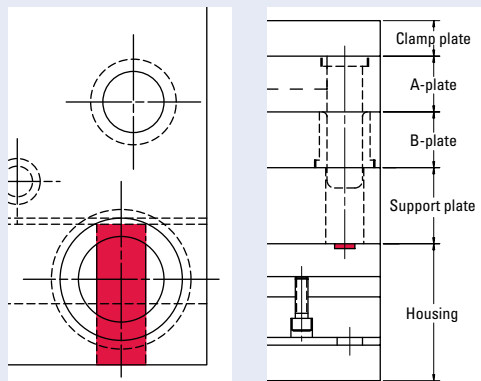
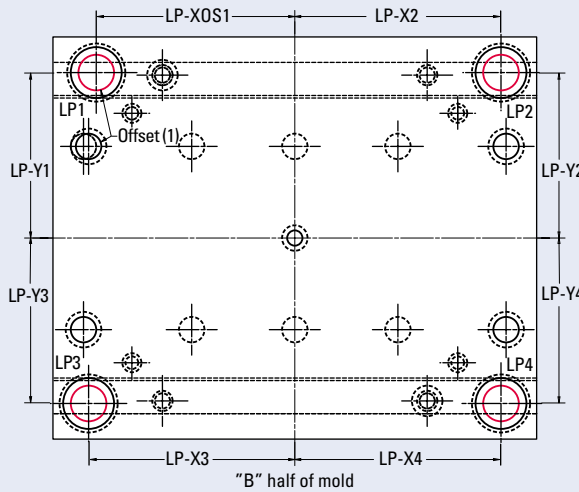
- LPxos1 _____ LPy1 _____
- LPx2 _____ LPy2 _____
- LPx3 _____ LPy3 _____
- LPx4 _____ LPy4 _____

Select Bushing

- Steel
- Bronze
- Self-Lubricating
- Omit Machining for Leader Pin and Bushings
- Omit Leader Pin and Bushing

Select Leader Pin Vents

Leader Pin Vents (0.50 wide x 0.12 deep) can be machined in the housing under the bushing location.



Leader Pin Positions

Size	Dia	LPxos	LPx	LPy
88	0.750	3.000	3.125	3.125
812	0.750	5.000	5.125	3.125
108	0.750	2.938	3.125	4.062
1012	0.875	4.875	5.062	4.062
1016	0.875	6.938	7.125	4.062
1020	0.875	8.938	9.125	4.062
1112	0.875	4.938	5.125	4.562
1114	0.875	5.938	6.125	4.562
1118	0.875	7.938	8.125	4.562
1123	0.875	10.688	10.875	4.562
1212	1.000	4.625	4.812	5.000
1215	1.000	6.125	6.312	5.000
1220	1.000	8.625	8.812	5.000
1223	1.000	10.375	10.562	5.000
1315	1.000	6.125	6.312	5.688
1318	1.000	7.375	7.562	5.688
1321	1.000	8.750	8.938	5.688
1323	1.000	10.125	10.312	5.688
1326	1.000	11.375	11.562	5.688
1329	1.000	13.125	13.312	5.688
1518	1.250	7.375	7.562	6.062
1524	1.250	10.250	10.438	6.062
1529	1.250	13.125	13.312	6.062
1616	1.250	6.375	6.562	6.562
1620	1.250	8.375	8.562	6.562
1623	1.250	10.125	10.312	6.562
1626	1.250	11.375	11.562	6.562
1629	1.250	13.125	13.312	6.562
1635	1.250	16.125	16.312	6.562
1724	1.250	10.250	10.438	6.812
1729	1.250	13.125	13.312	6.812
1818	1.250	7.375	7.562	7.562
1820	1.250	8.375	8.562	7.562
1823	1.250	10.125	10.312	7.562
1826	1.250	11.375	11.562	7.562
1829	1.250	13.125	13.312	7.562
1835	1.250	16.125	16.312	7.562
1924	1.250	10.250	10.438	8.312
1929	1.250	13.125	13.312	8.312
1935	1.250	16.125	16.312	8.312
2424	1.500	10.062	10.250	10.250
2429	1.500	12.938	13.125	10.250
2435	1.500	15.938	16.125	10.250

Upper and Lower Assembly Screws

Assembly screws are used to hold the plates of the upper and lower halves of the mold together. For simplicity, the upper and lower assembly screws are generally placed in similar positions.

Select Assembly Screws

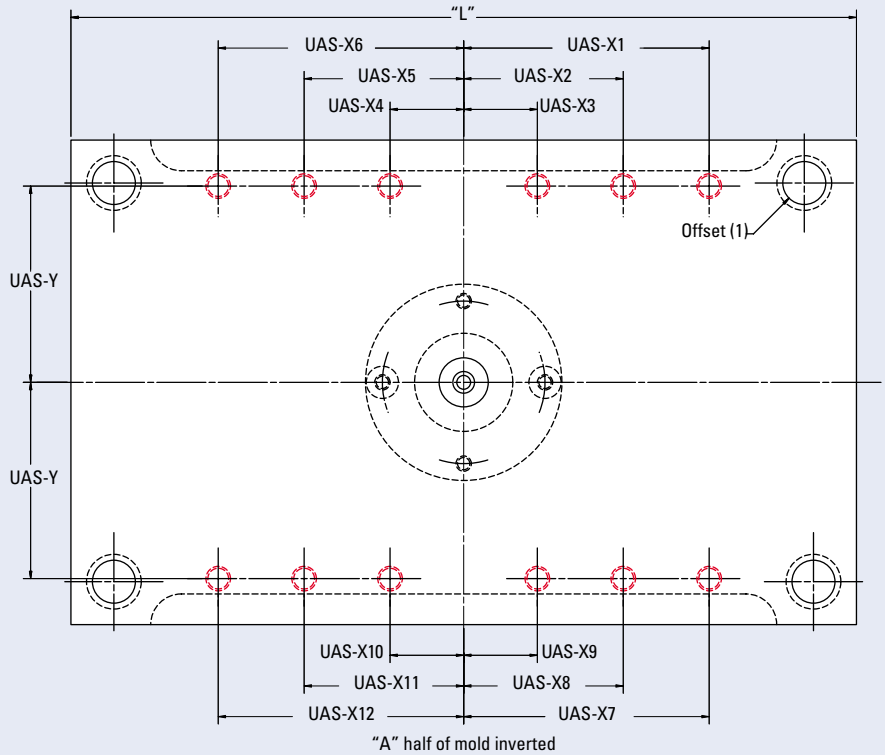
Upper Assembly Screws

Recommended position from table will be provided. If a different position is required, indicate below.

Select Position

- UASx1 _____
- UASx2 _____
- UASx3 _____
- UASx4 _____
- UASx5 _____
- UASx6 _____
- UASx7 _____
- UASx8 _____
- UASx9 _____
- UASx10 _____
- UASx11 _____
- UASx12 _____

- UASy _____



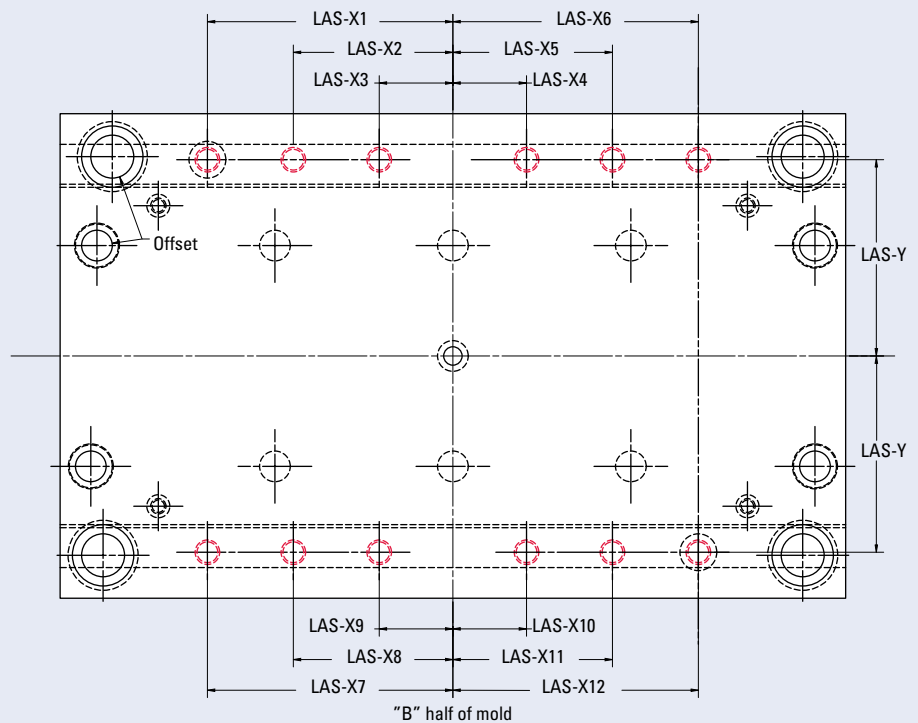
Lower Assembly Screws

Recommended position from table will be provided. If a different position is required, indicate below.

Select Position

- LASx1 _____
- LASx2 _____
- LASx3 _____
- LASx4 _____
- LASx5 _____
- LASx6 _____
- LASx7 _____
- LASx8 _____
- LASx9 _____
- LASx10 _____
- LASx11 _____
- LASx12 _____

- LASy _____

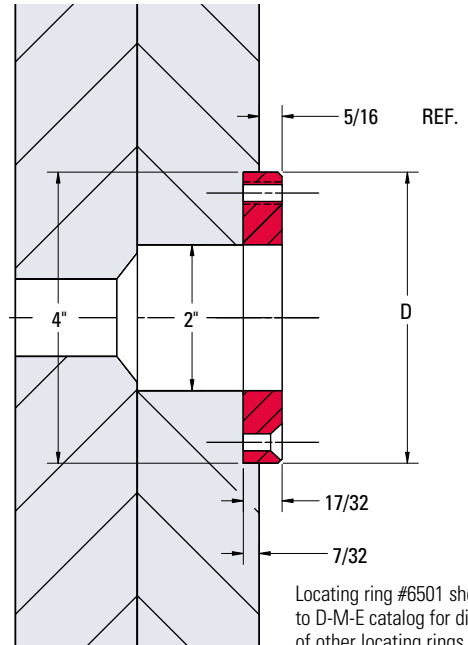


SelectBase Assembly Screw Hole Positions

Base Size	Screw Size	UASy LASy	UASx1 LASx1	UASx2 LASx2	UASx3 LASx3	UASx4 LASx4	UASx5 LASx5	UASx6 LASx6	UASx7 LASx7	UASx8 LASx8	UASx9 LASx9	UASx10 LASx10	UASx11 LASx11	UASx12 LASx12
88	1/2-13	3.125	1.375					1.375	1.375					1.375
812	1/2-13	3.125	2.250					2.250	2.250					2.250
108	1/2-13	4.000	1.875					1.875	1.875					1.875
1012	1/2-13	4.000	3.250					3.250	3.250					3.250
1016	1/2-13	4.000	5.000					5.000	5.000					5.000
1020	1/2-13	4.000	6.500			1.000		6.500	6.500	1.000				6.500
1112	1/2-13	4.469	3.188					3.188	3.188					3.188
1114	1/2-13	4.469	3.188					3.188	3.188					3.188
1118	1/2-13	4.469	5.875			1.000		5.875	5.875	1.000				5.875
1123	1/2-13	4.469	8.625		3.188	3.188		8.625	8.625	3.188	3.188			8.625
1212	1/2-13	4.969	2.812					2.812	2.812					2.812
1215	1/2-13	4.969	4.500			1.000		4.500	4.500	1.000				4.500
1220	1/2-13	4.969	6.625			1.000		6.625	6.625	1.000				6.625
1223	1/2-13	4.969	8.625		2.812	2.812		8.625	8.625	2.812	2.812			8.625
1315	1/2-13	5.719	4.500			1.000		4.500	4.500	1.000				4.500
1318	1/2-13	5.719	5.438			1.000		5.438	5.438	1.000				5.438
1321	1/2-13	5.719	6.750			1.000		6.750	6.750	1.000				6.750
1323	1/2-13	5.719	8.125		2.750	2.750		8.125	8.125	2.750	2.750			8.125
1326	1/2-13	5.719	9.375		3.250	3.250		9.375	9.375	3.250	3.250			9.375
1329	1/2-13	5.719	11.125		3.250	3.250		11.125	11.125	3.250	3.250			11.125
1518	1/2-13	6.469	5.438			1.000		5.438	5.438	1.000				5.438
1524	1/2-13	6.469	7.750		2.750	2.750		7.750	7.750	2.750	2.750			7.750
1529	1/2-13	6.469	10.625		3.688	3.688		10.625	10.625	3.688	3.688			10.625
1616	1/2-13	6.969	4.250			1.000		4.250	4.250	1.000				4.250
1620	1/2-13	6.969	6.250			1.000		6.250	6.250	1.000				6.250
1623	1/2-13	6.969	8.000		2.750	2.750		8.000	8.000	2.750	2.750			8.000
1626	1/2-13	6.969	9.250		3.125	3.125		9.250	9.250	3.125	3.125			9.250
1629	1/2-13	6.969	11.000		3.688	3.688		11.000	11.000	3.688	3.688			11.000
1635	1/2-13	6.969	14.000	8.500	2.875	2.875	8.500	14.000	14.000	8.500	2.875	2.875	8.500	14.000
1724	1/2-13	7.281	7.750		2.750	2.750		7.750	7.750	2.750	2.750			7.750
1729	1/2-13	7.281	10.625		3.688	3.688		10.625	10.625	3.688	3.688			10.625
1818	1/2-13	7.969	5.438			1.000		5.438	5.438	1.000				5.438
1820	1/2-13	7.969	6.438			1.000		6.438	6.438	1.000				6.438
1823	1/2-13	7.969	8.125		2.750	2.750		8.125	8.125	2.750	2.750			8.125
1826	1/2-13	7.969	9.375		3.125	3.125		9.375	9.375	3.125	3.125			9.375
1829	1/2-13	7.969	11.125		3.688	3.688		11.125	11.125	3.688	3.688			11.125
1835	1/2-13	7.969	14.125	8.500	2.875	2.875	8.500	14.125	14.125	8.500	2.875	2.875	8.500	14.125
1924	1/2-13	8.781	7.750		2.750	2.750		7.750	7.750	2.750	2.750			7.750
1929	1/2-13	8.781	11.125		3.688	3.688		11.125	11.125	3.688	3.688			11.125
1935	1/2-13	8.781	14.125	8.500	2.875	2.875	8.500	14.125	14.125	8.500	2.875	2.875	8.500	14.125
2424	5/8-11	10.844	7.750		2.750	2.750		7.750	7.750	2.750	2.750			7.750
2429	5/8-11	10.844	10.625		3.688	3.688		10.625	10.625	3.688	3.688			10.625
2435	5/8-11	10.844	13.625	8.500	2.750	2.750	8.500	13.625	13.625	8.500	2.750	2.750	8.500	13.625

Locating Ring

The Locating Ring aligns the mold base to the stationary platen side of the press and positions the sprue bushing correctly.



Locating ring #6501 shown; refer to D-M-E catalog for dimensions of other locating rings.

Select Locating Ring

Standard 6501 D = 3.990

Other (refer to table and D-M-E catalog) _____

Select Position

Position on center, or
select position

X _____ Y _____

Omit locating ring machining

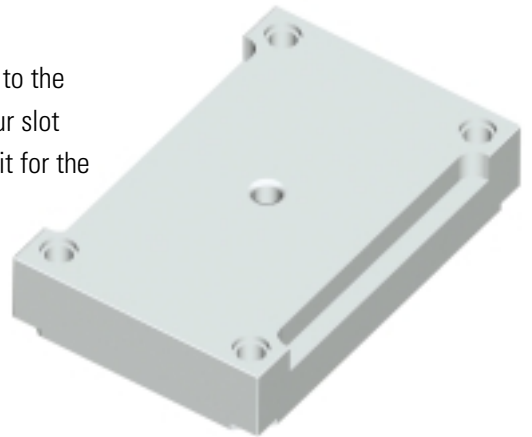
Omit locating ring

Locating Ring Options

Catalog Number	D	Description
6501	3.990	Standard Series
6501 LN	3.990	LN Series
6502	4.990	
6503	2.000	
6504	3.990	Clamp Type
6510	7.995	
6511	2.990	
6520	3.990	Extension Nozzle Type
6521	3.990	Standard Series
6522	3.990	Extension Nozzle Type
6524	3.990	Clamp Type
6536	4.331	Top Ring
6537	4.331	Bottom Ring
6541*	3.990	Standard Series
6544*	3.990	Clamp Type

* For use with high-temperature insulator sheets.

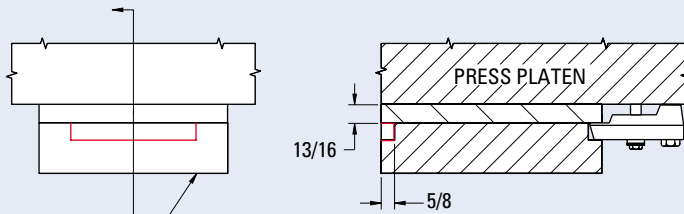
Clamp Slots facilitate clamping the mold to the platen of the press. SelectBase offers four slot types (shown below) to ensure the best fit for the requirements of your application.



Select Clamp Slot Type

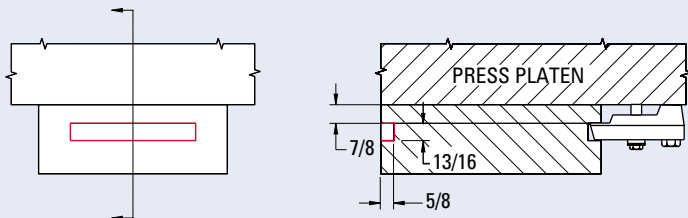
- Type A** - Machined when Top Clamping Plate is 7/8 or 1-3/8
- Type B** - Machined in plates that are 2-3/8 or thicker
- Type C** - Machined only when specified by a customer
- Type D** - Machined plates that are 1-7/8 thick.

Type A

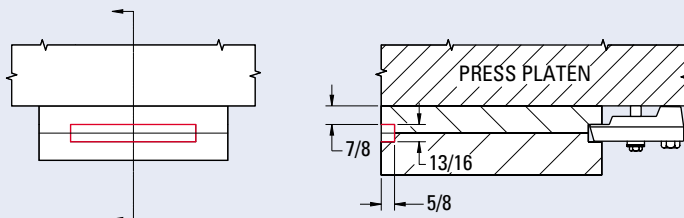


NOTE:
When this plate is 7/8 thick, the slots will be machined through the thickness.

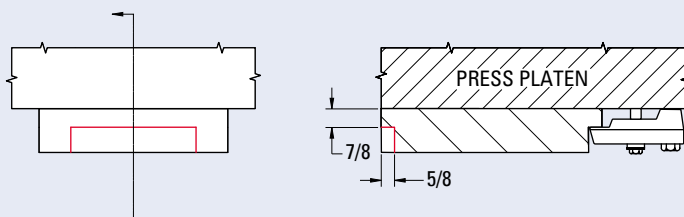
Type B



Type C

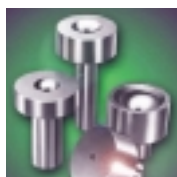


Type D



Build-to-order, not off-the-shelf.
 That's the simple premise
 behind the D-M-E SelectBase.
 Pay only for the features you
 need. Most configurations can
 be shipped in only a few days,
 and each SelectBase ships
 within 5 working days. All with
 D-M-E quality guaranteed.

Want the D-M-E edge? Call
 us today. From components
 to turnkey solutions, nobody
 beats D-M-E for quality
 products, quality service,
 and rapid delivery.



D-M-E Company
World Headquarters
 29111 Stephenson Highway
 Madison Heights, MI 48071
 800-626-6653 *toll free*
 248-398-6000 *tel*
 888-808-4363 *fax*
 info@dme.net *e-mail*
 www.dme.net *web*

D-M-E of Canada, Ltd.
 6210 Northwest Drive
 Mississauga, Ontario, Canada L4V 1J6
 800-387-6600 *toll free*
 905-677-6370 *tel*
 800-461-9965 *fax*

D-M-E Europe
 Industriepark Noord
 B-2800 Mechelen, Belgium
 32-15-215011 *tel*
 32-15-218235 *fax*

